

Welcome Guide for International Students

École supérieure d'art
et de design TALM

École d'Angers



ÉCOLE
SUPÉRIEURE
D'ART ET
DE DESIGN

TOURS
ANGERS
LE MANS

Contents

Before your arrival

How to reach Angers city
About our school

After your arrival

Mandatory Visa Procedures
(NON European Union student)
- OFII
- Temporary visitor's card

Insurance and Social Protection
CAF - Student Housing Aid
French Classes

Daily Life in Angers

Accommodation
Cost of Living and Bank Procedures
Transports
Culture, Tourism, Leisure
School Vacation
Emergency numbers

Before your arrival...

How to reach Angers city

Angers city is about 1h40 by train from the train station « Paris Montparnasse » (which is almost at the center of Paris).

Or about 2h30 by train from the train station of one of the 2 Paris airports, “Roissy Charles de Gaulles airport” (which is at the north east of Paris).



The other Parisian airport is called “Paris -Orly airport”, at the south of Paris: if you arrive there, you can take the tube and then the train at Paris Montparnasse to Angers.

Also, there is a smaller airport in Nantes, which is closer to Angers (about 20 minutes by bus to Nantes city center + 40 minutes by train to Angers).

So to come to Angers, there are 3 possibilities:

- By plane to Paris Charles de Gaulles + train to Angers
- By plane to Paris - Orly airport + tube + train to Angers
- Or plane to Nantes + bus + train to Angers.

The train station of Roissy Charles de Gaulles airport is referred to in it as “Paris CDG airport”. And for your info, after the research, Angers appears on the lists of schedule as station “Angers St Laud”.

The website in English language for the train (“TGV”) is: <https://uk.voyages-sncf.com/en/#/>

About our school...

Institution

École supérieure d'art et de design TALM-Angers
TALM School of Fine Arts and Design, Angers, France

Address

72 rue Bressigny, 49100 Angers, France Tel: +33 (0)2 72 79 86 90
Kerviller - Annex buliding, 75 rue Bressigny, 49100 Angers

Opening hours:

Working days: 8 am to 8 pm, closed at weekend

Secretary Office: Monday and Friday – 9 am to 12.30 am, closed in afternoon
(*School vacation: Monday and Friday – 9 am to 12 am, closed in afternoon*)

Tuesday to Thursday – 9 am to 12.30 am, 2 pm to 5.30 pm
(*School vacation: Tuesday to Thursday – 9 am to 12 am, 2 pm to 5 pm*)

Director: Ms. Anne-Hélène FROSTIN

International coordinator

Dorian GASTON
+33 (0)2 72 79 86 97
dorian.gaston@talm.fr

Websites

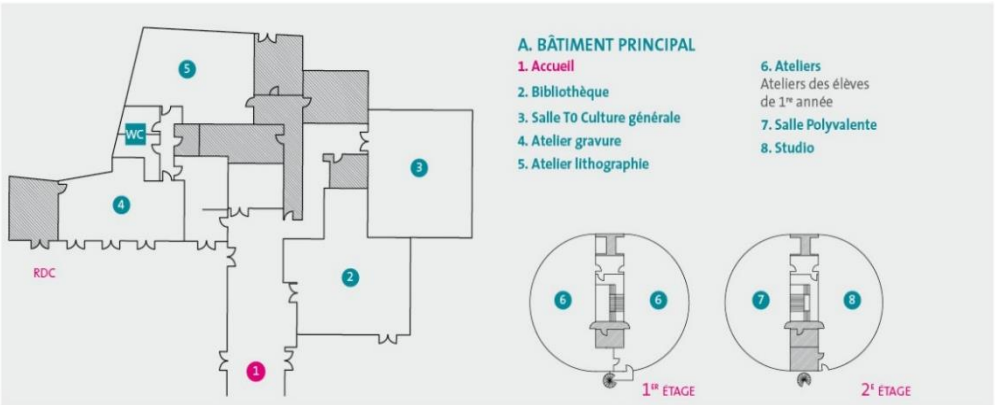
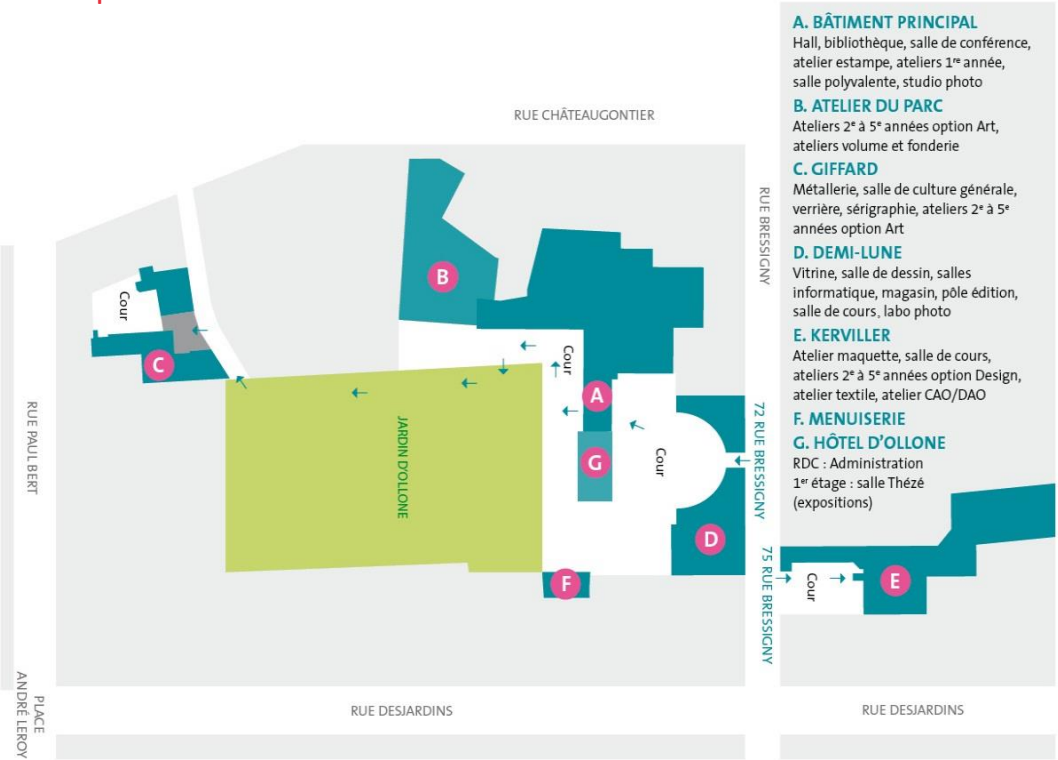
The school website: <https://esad-talm.fr/en>

International Relation of school: <https://esad-talm.fr/en/l-international/incoming-student> (including presentation of the school, its programs on each campus and a Student Guide)

Facebook: <https://www.facebook.com/ESADTALM>

Twitter: <https://twitter.com/ESADTALM>

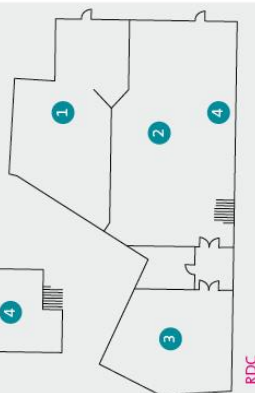
Map of school



B. ATELIER DU PARC

1. Espace accrochage
2. Atelier volume
3. Atelier fonderie
4. Ateliers
Ateliers des élèves
de l'option Art

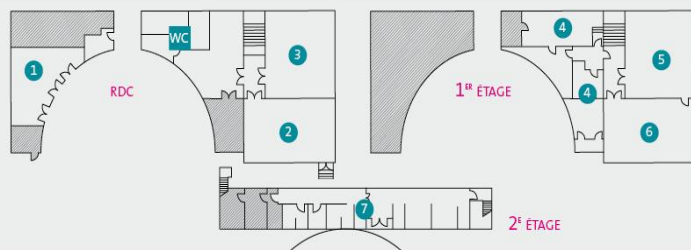
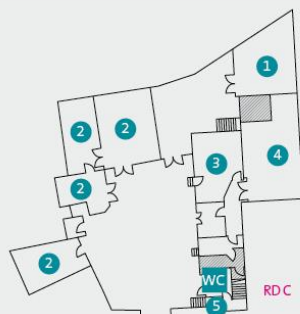
MEZZANINE



C. GIFFARD

1. Métallerie
2. Sérigraphie
3. Salle de culture générale
4. Verrière
5. Ateliers

Escaliers permettant l'accès Ateliers des élèves de l'option Art (1^{er} étage)



D. DEMI-LUNE

1. Vitrine sur cour
2. Salle de dessin
3. Magasin
4. Salles informatiques
5. Pôle édition
6. Salle DL1 Culture générale
7. Laboratoires photo

E. KERVILLER

1. Atelier Maquette
2. Salle KOB
3. Ateliers
Ateliers des élèves de l'option Design
4. Atelier textile
5. Ateliers
Ateliers des élèves de l'option Design
6. Atelier CAO/DAO
7. Ateliers
Ateliers des élèves de l'option Design
8. Ateliers
Ateliers des élèves de l'option Design



After your arrival...

Mandatory Visa Procedures - OFII (non-European student)

Mandatory procedure of student visa: You must have your visa validated by the French office for immigration and integration (OFII). To do this, you must send a registered letter (with “acknowledgement of receipt or equivalent”) to the address below, within three months (at the latest) of your arrival in France.

The letter must contain the form that you received from the French Embassy, or Consulate, in your country of origin, on which should be noted your address in France, the number of your visa, the date of your entry to France (or in a member Country of the Schengen space) in addition to a photocopy of the pages of your passport that show your identity and the stamp indicating the date of your entry to France (or to a member Country of the Schengen space).

Office Français de l'Immigration et de l'Intégration (OFII)

93 bis, rue de la Commune de 1871, 44400 REZÉ Tel. 02 51 72 79 39
nantes@ofii.fr <http://www.ofii.fr> <http://www.ofii.fr/venir-etudier-en-france>

You will then be summoned by the OFII to validate your visa, pass a mandatory medical test and pay the regulatory taxes. At the end of this process your stay in France will be authorized. Failure to respect this procedure will result in you being obliged to return to your country of origin so as to request a new visa.

If you wish to study in France after the expiry date of your visa, validated by the OFII: you must make a formal request to the **Préfecture** (provincial government office) to renew your long stay visa (VLS-TS) one month before the expiry date of your visa.

Préfecture d'Angers:

Site Hanneloup - Direction de l'immigration et de la nationalité
7 bis rue Hanneloup, 49100 Angers

Temporary visitor's card (non-European student)

If you are a non-European student and if your study period is more than 9 months, you are obliged to apply for a temporary visitor's card ("*carte de séjour temporaire*").

If possible, don't take any kind of visa untitled "*dispense temporaire de carte de séjour*" because the visitor's card is needed if you want to claim housing benefit.

In order to apply, you should provide the following documents:

- A birth certificate translated into French
- If you are concerned : marriage certificate, translated into French (if your husband or wife resides in France)
- Proof of fixed abode in the Department, rent payment receipt or a copy of your lease
- Proof of enrollment in our school
- Proof of financial resources, grant or scholarship certificate or proof of personal means (salary slip or declaration of income tax from your parents or someone else undertaking to pay a sum of money for you, indicating the amount and the period during which payment is to be made)
- Certificate of reciprocal agreement with the French Social Security
- 4 identity photographs (full face with a clear background, hatless)
- A stamped self-addressed envelope

Please note: The Prefecture will give the student a « Request for a Medical Visit » form when he/she goes with all his/her documents. Following this free visit to a designated doctor, the visitor's card may be attributed. While awaiting the completion of such formalities, the student will receive a provisional visitor's card, usually valid 3 months but may be renewed. This is a separate document from the passport, but is given back to the Prefecture when the temporary residence permit is issued.

Préfecture d'Angers: <http://49.accueil-etrangers.gouv.fr/>

Monday and Friday: 9.15 am to 12.30 am, Tuesday and Wednesday: 9.15 am to 16.15 pm, Thursday: 9.15 am to 12.15am

Insurance and Social Protection

- **Personal liability (“Responsabilité Civile”):**

After arriving at TALM, once you have found your accommodation, you will have to get a certificate of “personal liability” for your accommodation and including for the audiovisual/multimedia materials you will borrow at the school. This will be of a cost of about 25 euros for the academic year, to be paid among one of the insurance student organism. This is required for all students in the school, including for incoming exchange students.

- **Health insurance:**

Students from European Union: you must give a copy of your European health insurance card when you arrive at TALM, or a copy of a private health insurance certificate.

Students from outside European Union: Before or just at your arrival at TALM, you must give a copy of a document stating that you have a personal international insurance covering you during your semester in France (from a private insurer or a national insurance scheme). Insurance must cover at a minimum: medical costs, hospitalization, surgery and repatriation.

Moreover, all foreign students coming from a country outside the European Union, staying more than 3 months in France for a study period, must pay for the student national health insurance (when they are less than 28 years old). It is a cost of about 215 euros for one academic year, to be paid to one possible insurance student organisms **SMEBA**, and it is part of the Social Protection legislative system (Sécurité Sociale). The French social security entitles them to reimbursement for approximately 60% of your healthcare costs (GP consultation, pharmacy, hospital).

SMEBA

42 boulevard du Roi René, 49000 Angers

Tel: 02 41 20 82 82

<https://www.smeba.fr/>

After a medical visit, you can get reimbursed directly by your health insurance company from your home country by sending it your bills and receipts of payment. You can get a refund from the CPAM (Caisse Primaire d'Assurance Maladie = French healthcare system) by sending the following documents to the International Relations department of the CPAM:

- A treatment form (“feuille de soins”) which you obtain from your doctor
- A photocopy of your European health card
- R.I.B (“relevé d'identité bancaire” - bank account information form)
- Photocopy of your student ID card

To have a fair health coverage?

Insurance companies also offer a complementary health insurance policy which covers the remaining of your medical expenses. Registering for a complementary health insurance is **not compulsory**. You will find all the information about prices and contracts from the insurances companies' website. In any case you have to be attentive before signing any contract.

To get a health care?

In France, you may choose your doctor freely. If you have an appointment with a general practitioner (généraliste), the consultation will cost about 23 euros to be paid directly to the GP. Note that consultations with unconventional doctors are more costly. Some addresses maybe useful for you:

SUMPPS (University Medical and health care service):

Maison des étudiants 2, bd Beaussier, 49045 Angers cedex 01.

Tel. 02 41 22 69 10.

Website to find a doctor: <http://annuaire.sante.ameli.fr/>

To find a pharmacy in Angers:

<https://www.pagesjaunes.fr/annuaire/angers-49/pharmacies>

CAF - Student Housing Aid

APL and ALS are French financial support for accommodation made by the Caisse d'Allocations Familiales (called CAF = Family Benefit Fund). You are a student, living and paying rent for an apartment, furnished housing, or a room, you may be eligible for student housing aid. To apply a housing aid as soon as you move in, you will need:

- Your rental agreement;
- Your French bank account information slip (Relevé d'identité bancaire: RIB);
- The amount of your financial resources;

Important Information

- You must not be related to your landlord (father, mother, grandparents), even if you rent through an agency.
- The rental agreement must be made out in your name.
- Your housing aid entitlement generally begins the month after you move in. If you move into your accommodation in September and you will be entitled to housing aid at beginning in October.
- Before you begin your online application, you can estimate the amount of your housing aid entitlement in the section "Les services en ligne: estimer vos droits".
- If you need to provide documentary evidence, the list of required documents will appear on the last page of your online application.

Your online application

- Eligibility criteria ("Conditions d'accès"): Fill in the information about your accommodation.
- Legal agreement ("Engagement"): Read this agreement carefully.
- Enter your information ("Saisie"): Fill in the information about your circumstances and your accommodations; when your application is registered, you will receive an email with the number your application was saved under.

- Finalize your application (“Fin”): Once your application has been registered, you will be assigned a benefits recipient’s number. Keep it in a safe place, you will need your benefits recipient’s number and your password to log into your account area (“Mon compte”).

For more information, check out: www.caf.fr/international or Facebook page “Caf-Logement Etudiants” or call 0 810 29 29 29 (Monday through Friday from 9 a.m. to 4:30 p.m. 0.06 € per minute + the cost of the call).

French Classes

For any student who wants to take a French lesson or other foreign language (English, Italian, Spanish...) there are free courses at the “Institut Municipal” near the school.

TALM-Angers recommend all the foreigner students who speak rarely the French during their staying to follow the first level of French classes.

“Institut Municipal” is in front of Museum of Fine Art Angers (“Musée des beaux – arts d’Angers”) , at La place Saint-Eloi.

Tel: 02 41 05 38 80

<http://www.angers.fr/vivre-a-angers/culture/enseignement-cours-pour-adultes/institut-municipal/index.html>



Daily Life in Angers...

Accommodation

1- Either you decide to go to “Cité Faidherbe”, we have 4 accommodations at the university campus (We have an agreement for accommodation with the university). It's at 20 minutes walking from the school.

A link to see an accommodation: <http://www.crous-nantes.fr/logement/residence-faidherbe/>

For an accommodation with a bed, a table, chairs, desk, cupboards, a fridge, a shower and a kitchen:

- The price for one month : 314,09€ (electricity is not included in the accommodation)
- the price for deposit of guarantee : 208,30€ (if you don't cause any damage to the room, the money is given back to you)

If you want to choose this option for accommodation, please send a message to dorian.gaston@talm.fr before 21th June to reserve.

If you need a hotel at your arrival

A few moderate priced hotels : Hôtel du Mail, Royal Hôtel, Hôtel Jeanne de Laval
Hôtel des Lices, Hôtel d'Iéna, Hôtel Marguerite d'Anjou

Foyer Darwin - http://www.foyerdarwin.com/auberge-de-jeunesse/?rel=reservation-groupe-auberge-de-jeunesse-fr_fr

‘Ethic Etapes’ lodgings: www.ethic-etapes-angers.fr/

Student accommodations / ‘Foyers pour jeunes travailleurs’

- Foyer Marguerite d'Anjou (girls only)
52 bd du Roi René (10 minutes walking from the school)
Tel: +33 (0)2.41.20.24.00

Two possibilities:

- **A single room:** about 12-15 m², Shower bath and toilets included in the room. It is obligatory to pay for the room and half-board for a total of 435,30 euros per month : 358,30 euros = room, 68 euros = 18 meals per month (lunch or dinner), 9 euros = access to collective places of the Foyer and including access to Wi-Fi
- **room for 2 people:** 17 to 27 m², Includes shower bath, toilets and a small kitchen in it. 257,28 euros per person per month (or studio for 3 people: 292 euros per person per month). No obligation to take half-board/meals.
- **Single studio :** 18-21m² : 416,90€/month
- **Studio for 2 :** 18-27m² : 262,60€/month

To make a booking in advance (of 1 room or 1 studio): you have to pay:

Registration fee: 70 euros per person (including 50 euros which will be deducted from the first invoice). Security deposit: 270 euros per person (which is given back at the end of the stay if there is no damage caused to the room and the general/public areas of the Foyer)

- Foyer Familial des Jeunes Travailleurs Angevins
22 rue David D'Angers - 49000 Angers - Tel : 33 (0)2 41 24 37 37
(Very demanded, young workers priority)
- Foyer Merici (girls)
62, rue Mirabeau (13 minutes walking from the school)
<http://foyer.merici.free.fr/> Tel : +33 (0)2 41 25 35 00

A room about 10 m². Toilets, shower and kitchen are collective, outside the room. It is obligatory to pay for the room and half-board (breakfast and dinner), for a total of 650 euros per month or 700 euros with shower.

To make a booking in advance, you have to pay: Registration fee: 60 euros. Security deposit: 650 euros (which is given back at the end of the stay if there is no damage caused to the room and the general/public areas of the Foyer). One month pre-payment of 650 euros. And there's a registration form to fill in (to be asked by e-mail to the Foyer – see their website).

- Foyer des Ormières (girls)
4, rue Talot (9 minutes walking from the school)
<http://www.foyerormieres.fr/> Tel : +33 (0)2 41 87 44 11

It is obligatory to pay for the room and half-board (breakfast and dinner), for a total of 481 euros per month (251 euros per person for the room, 230 euros per person for half board).

To make a booking in advance: Registration fee: 60 euros. One month pre-payment of the room, 251 euros. And there's a registration form to fill in (to be asked by e-mail to the Foyer – see their website). At your arrival : deposit of 200 euros to pay, which is given back at the end of the stay if there is no damage caused to the room and the general/public areas of the Foyer.

- Foyer de l'Esivière :
2 bis, rue de l'Esivière. <http://foyer.esviere.free.fr/>
Tel. +33 (0)2 41 88 94 25

680 euros per month for one room including half board obligatory

- Foyer résidence Harmattan/ Beauséjour (boys and girls) :
36, bd Alloneau. 35 minutes walking from the school or by bus
Tél. +33 (0)2 41 43 95 55.

379 euros per month (includes access to Wi-Fi). 14 m², collective Kitchen apart. Justification to provide for pre-booking: passport/identity piece, enrollment certificate at the school, letter explaining your coming at Angers and at the school. If your application is accepted, the Foyer sends you its bank identity details for you to make the booking: 80 euros (will be deducted from the 1st rent invoice, a security deposit of 150 euros is to pay after the arrival).

- Foyer St Aubin (boys)

22 rue Donadieu de Puycharic. 10 minutes walking from the school

Tel: +33 (0)9 81 35 25 25 / +33 (0)2 41 88 85 32

foyersaintaubin@yahoo.fr

If you prefer accommodation other than halls of residence, a list of addresses will help you find suitable accommodation.

Le bon coin: You can also view the propositions and the ads about accommodation: <http://www.leboncoin.fr/>

- Select Pays de la Loire region
- Toutes catégories > Immobilier > location or colocation
- Villes ou code postal > Angers (49100 or 49000)

On Facebook : « Colocations et location appartements Angers » group

Smeba: Student Health Insurance Centre have an accommodation searching service: <https://www.smeba.fr/foreign-students.html>

Lokaviz: <http://www.lokaviz.fr/>

Your accommodation expenditure can be considerably reduced if you apply for an APL (personalized accommodation aid). To benefit from this you should apply to the CAF. (To page 11)

Cost of Living and Bank Procedures

Incoming students don't pay any registration fee at TALM-Angers, because they pay it at home school. However they need to pay for consumable and personal tools (materials and specialized tools are provided by the school in equipped workshops for the students).

For your rent, bills, shopping, leisure activities, you must allow for at least 550 to 700 euros per month according to your lifestyle and type of accommodation. However you should allow for a larger amount for the first month of arrival (accommodation deposit, electricity connection, gas and telephone, insurance and other expenses). It is highly recommended to open a French bank account as soon as you arrive.

How to proceed to open a bank account?

Opening a bank account in France generally requires time and documents. The whole procedure can take at least 2 weeks. You have to follow those steps:

- Present yourself at the agency of your choice to take an appointment with a bank advisor in Angers.

Several documents are required for the appointment:

- Passport or identity card and Proof of accommodation = "Attestation/Justificatif de domicile". (If you're accommodated in

hall of residence: ask to the administrative office of the residence. If you're not accommodated in hall of residence: ask to your landlord).

- Proof of registration = “Certificat de scolarité” (as student of TALM-Angers)

Sometimes a minimum amount should be paid for the opening of the account (around 15 €). Once your account is open, according to the bank agency conditions, you receive a credit card within ten days.

Transports

To travel in Angers? By bus or by Tramway

Irigo is the urban transportation company in Angers and its surroundings. It offer Bus and Tramway to travel better in the city. Both Bus line and Tramway have their own timetable, which depends on 2 main periods (winter timetable from September to June, summer timetable from July to August) and different days: Working days, Saturday, School Holidays, Sunday and Public Holidays.

- General rates

Ticket: 1.50€ (The ticket is valid for 1 hour in Angers transports)

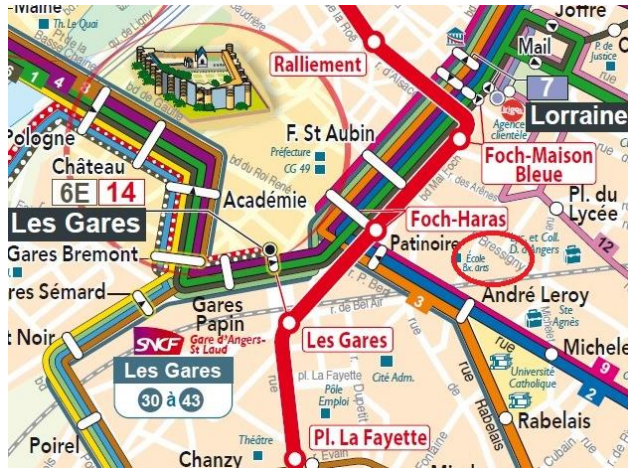
Book of 10 tickets: 13€

Monthly subscription: 29€ (6-25 years-old rate)

- Travel to the school
(École des beaux-arts, Rue Bressigny)

Tramway Line A - Stop: Foch
Maison Bleu or Foch Haras
Bus line 1 2 3 4 and 9 – Stop:
Foch St Aubin
Bus line 12 – Stop: Foch
Maison Bleu

- Important spots



Train Station (Gare SNCF-Angers St Laud): Tramway Line A - Stop: Les Gares
Hospital (CHU-Hôpital): Tramway Line A - Stop: CHU-Hôpital
Castle (Château): Bus line 1 3 4 5 6 - Stop: Château
Police Station (Hôtel de Ville) : Bus line 1- Stop: Lorraine

Customer Office – Irigo: Place Lorraine, tel: 02 41 33 64 64

<https://www.irigo.fr/>

Working day: 8.30 am - 6.30 pm, Saturday: 8.30 am – 1.30 pm

Culture, Tourism, Leisure

As the capital of the department of Maine-et-Loire and the historic capital of Anjou, Angers has an exceptional historical and artistic heritage: In addition to the 13th-century castle, the medieval city and the Saint-Maurice cathedral.

Tourist Office « Office de tourisme d'Angers Loire Métropole »

7 place Kennedy BP 15157, 49051 Angers

<https://www.tourisme.destination-angers.com/>

List of Museums in Angers

Angers offers many museums and exhibition spaces: Saint-Martin collegiate church, David d'Angers gallery ("Galerie David d'Angers"), Jean Lurçat museum and contemporary tapestry ("Musée Jean-Lurçat et de la tapisserie

contemporaine”), Museum of Fine Arts (“Musée des Beaux-Arts”), Museum of Natural History, Pincé museum....

<http://musees.angers.fr/accueil/index.html>

Angers has made its mark at some of the biggest and most important festivals in France with a wealth of distinctive musicians and film makers recognized at first by their local audiences and now throughout the country.

Le Quai - An important art and culture center of city

CALE DE LA SAVATTE - ANGERS

tel : 02 41 22 20 20

<http://www.lequai-angers.eu/>

Premiers Plans - An international festival for Europe’s most gifted young movie makers. Important participation of TALM students these latest years
9 rue Claveau - BP 82214 - 49022 ANGERS Cedex 02

tel : 02 41 88 92 94

angers@premiersplans.org

<http://www.premiersplans.org/>

School Vacation

Our students have school vacations during the whole Christmas holiday (Vacances de Noël), the Winter holiday (“Vacances d’hiver”) and the first week of Easter holiday (Vacances de Pâques) and Toussaint holidays, and every bank holidays (“jour férié”).

Please check your semester timetable or a website to have precise dates of vacations.

<http://vacances-scolaires.education/>

Emergency numbers

S.A.M.U. (emergency medical): 15

(During nights or weekends, if your calling is not a matter of a life-threatening emergency, call at 02 41 33 16 33)

Firemen: 18

Police: 17

European Emergency number: 112 *(for every emergencies: medical, fire, police...).*

Poison control center: 02 41 48 21 21

Hand care hospital: 02 41 86 86 41

Dental emergencies (week-end): 02 41 87 22 53

Gas control service GRDF 24H/24: 0800 47 33 33 (numéro vert- free call)

Repair service ERDF (electricity) 24H/24: 0810 333 049 (numéro azur – local rate call)

Water: 02 41 05 50 50

Sanitation service: 02 41 05 51 51

